

## Property For Rent - Randwick

Rent in Randwick - \$695

Ad Domain

# Australian researchers show first observation of native ferroelectric metal

Tyler O'Neal, SC Online News Editor / July 5, 2019, 5:52 pm

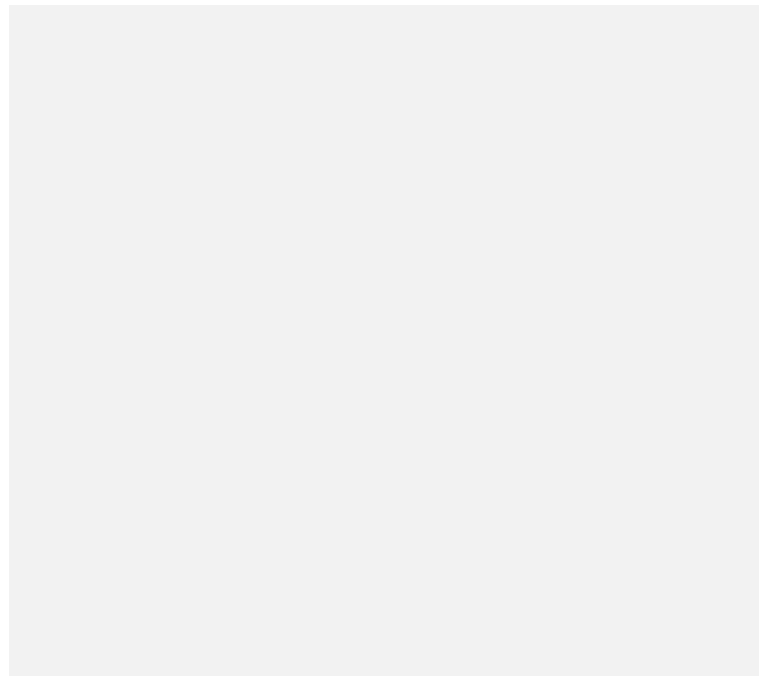
tungsten ditelluride shows bistable and electrically switchable spontaneous polarization states; potential for new nano-electronics applications

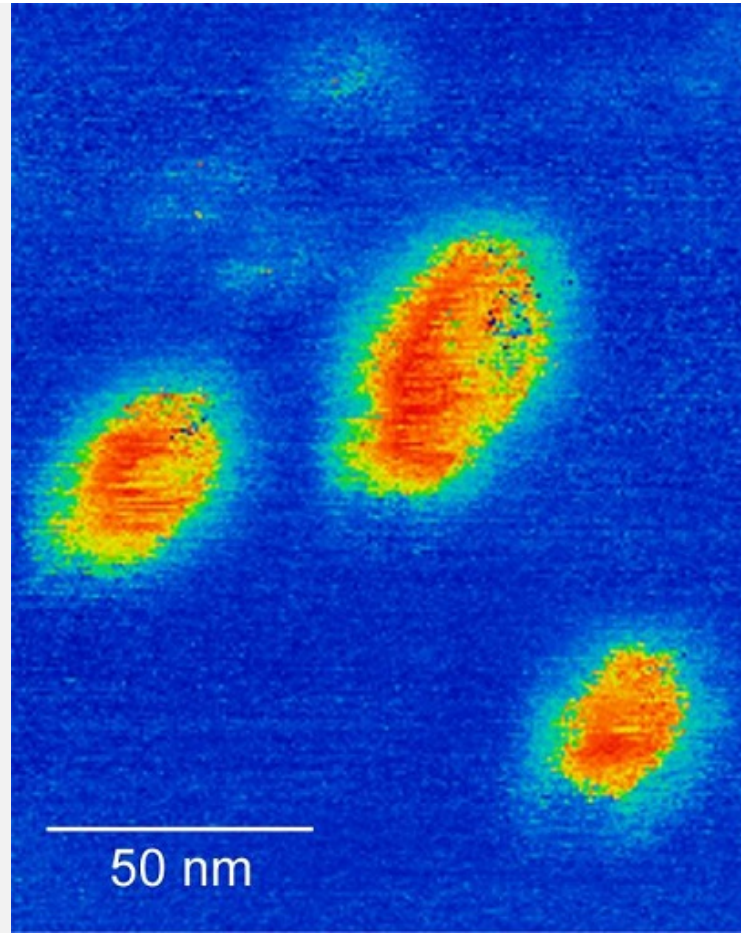
In a paper released today in *Science Advances*, UNSW researchers describe the first observation of a native ferroelectric metal.



[The study](#) represents the first example of a native metal with bistable and electrically switchable spontaneous polarization states - the hallmark of ferroelectricity.

"We found the coexistence of native metallicity and ferroelectricity in bulk crystalline tungsten ditelluride ( $\text{WTe}_2$ ) at room temperature," explains study author Dr. Pankaj Sharma.





Ferroelectric domains in a WTe2 single crystal (PFM imaging).

[Shop Now](#)[Shop Now](#)[Shop Now](#)[Sho](#)

"We demonstrated that the ferroelectric state is switchable under an external electrical bias and explain the mechanism for 'metallic ferroelectricity' in  $WTe_2$  through a systematic study of the crystal structure, electronic transport measurements, and theoretical considerations."

"A van der Waals material that is both metallic and ferroelectric in its bulk crystalline form at room temperature has the potential for new nano-electronics applications," says author Dr. Feixiang Xiang.

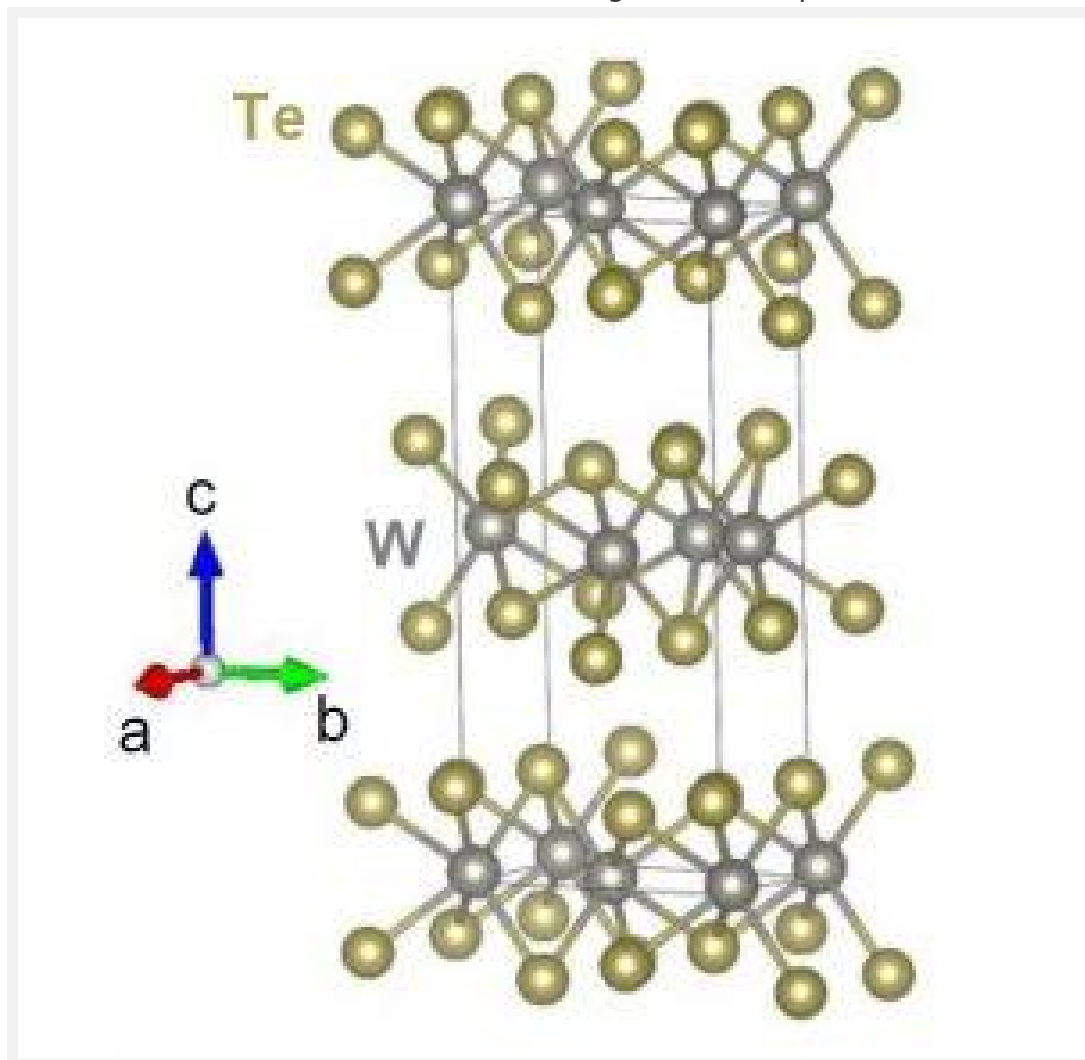
### **FERROELECTRIC BACKGROUNDER**

Ferroelectricity can be considered an analogy to ferromagnetism. A ferromagnetic material displays permanent magnetism, and in layperson's terms, is simply, a 'magnet' with north and south pole. Ferroelectric material likewise displays an analogous electrical property called a permanent electric polarisation, which originates from electric dipoles consisting of equal, but oppositely charged ends or poles. In ferroelectric materials, these electric dipoles exist at the unit cell level and give rise to a non-vanishing permanent electric dipole moment.

This spontaneous electric dipole moment can be repeatedly transitioned between two or more equivalent states or directions upon application of an external electric field - a property utilised in numerous ferroelectric technologies, for example nano-

electronic computer memory, RFID cards, medical ultrasound transducers, infrared cameras, submarine sonar, vibration and pressure sensors, and precision actuators.

Conventionally, ferroelectricity has been observed in materials that are insulating or semiconducting rather than metallic, because of conduction electrons in metals screen-out the static internal fields arising from the dipole moment.



## THE STUDY

A room-

This is a model of tungsten ditelluride  $WTe_2$  crystals in a layered, orthorhombic structure.

temperature ferroelectric semimetal was published in *Science Advances* in July 2019.

Bulk single-crystalline tungsten ditelluride ( $\text{WTe}_2$ ), which belongs to a class of materials known as transition metal dichalcogenides (TMDCs), was probed by spectroscopic electrical transport measurements, conductive-atomic force microscopy (c-AFM) to confirm its metallic behavior, and by piezo-response force microscopy (PFM) to map the polarisation, detecting lattice deformation due to an applied electric field.

Ferroelectric domains - ie, the regions with the oppositely oriented direction of polarization - were directly visualized in freshly-cleaved  $\text{WTe}_2$  single crystals.

Spectroscopic-PFM measurements with a top electrode in a capacitor geometry were used to demonstrate switching of the ferroelectric polarization.

The study was supported by funding from the Australian Research Council through the ARC Centre of Excellence in Future Low-Energy Electronics Technologies (FLEET), and the work was performed in part using facilities of the NSW Nodes of the Australian National Fabrication Facility, with the assistance of the Australian Government Research Training Program Scholarship scheme.

First-principles density functional theory (DFT) calculations (University of Nebraska) confirmed the experimental findings of the electronic and structural origins of the ferroelectric instability of  $\text{WTe}_2$ , supported by the National Science Foundation.

### **FERROELECTRIC STUDIES AT FLEET**

Ferroelectric materials are keenly studied at FLEET (the ARC Centre of Excellence in Future Low-Energy Electronics Technologies) for their potential use in low-energy electronics, 'beyond CMOS' technology.

The switchable electric dipole moment of ferroelectric materials could, for example, be used as a gate for the underlying 2D electron system in an artificial topological insulator.

In comparison with conventional semiconductors, the very close (sub-nanometre) proximity of a ferroelectric's electron dipole moment to the electron gas in the atomic crystal ensures more effective switching, overcoming limitations of conventional semiconductors where the conducting channel is buried tens of nanometres below the surface.

Topological materials are investigated within [FLEET's Research theme 1](#), which seeks to establish ultra-low resistance electronic paths with which to create a new generation of ultra-low energy electronics.

FLEET is an ARC-funded research center bringing together over a hundred Australian and international experts to develop a new generation of ultra-low energy electronics, motivated by the need to reduce the energy consumed by supercomputing.

**Comments (0)**

---





There are no comments posted here yet


## Leave your comments

Posting comment as a guest. [Sign up](#) or [login](#) to your account.

Name (Required)	Email	Website
-----------------	-------	---------

<b>B</b>	<i>I</i>	<u>U</u>										<input type="checkbox"/> Background
----------	----------	----------	--	--	--	--	--	--	--	--	--	-------------------------------------

Write your comment here...



Submit Comment



[Prev](#)[Next](#)

## Related Articles

### [The Nobel Prize in Physics is awarded to Syukuro Manabe, Klaus Hasselmann, Giorgio Parisi](#)

October 5, 2021, 7:00 am

### [South Korean built deep learning framework enables material design in unseen domain](#)

October 1, 2021, 7:00 am

### [German, Chinese team develops a new approach for efficient data processing](#)

September 27, 2021, 12:00 pm

You are here: [FRONTPAGE](#) / [NEWS](#)

/ [FAU prof Hill first to model COVID-19 completion vs. cessation study using machine learning](#)

## POPULAR ARTICLES

[Hebrew University prof analyzes the supercomputing power of a neuron](#)

[UC Riverside astronomer uses supercomputer simulations to reveal how the very faint dwarf galaxies are born](#)

[ESO captures best images yet of peculiar dog-bone asteroid](#)

[Machine learning uncovers genes of importance in agriculture, medicine](#)

New York Tech physicist wins NSF grant to solve a cosmic mystery using weather prediction techniques

Osaka University researchers train a deep learning algorithm to find features of movement disorders shared across species which may assist in understanding Parkinson's disease

Stanford scientists solve mystery of icy plumes that may foretell deadly supercell storms

URI researchers win \$1.5 million NOAA grant to protect New England coastal communities, national parks, wildlife refuges from impact of sea-level rise, extreme weather

Duke, Pitt researchers demo training enormous AI models in health care while protecting data privacy

Is your ML training set biased? How to develop new drugs based on merged datasets

## THIS YEAR'S MOST READ

UC Santa Cruz direct visualization of quantum dots reveals shape of quantum wave function

Tokyo University of Science uses a power tool from math for quantum supercomputing

European Commission launches EXPLORE project to develop AI, interactive visualization applications in astrophysics, planetary science

New Cambridge Centre connects AI, medicine, UK life sciences sectors

MIT's Boyden shows the symphony of cellular signals driving biology

Korean bio simulations open a new way to reverse cell aging

Japanese scientists study killer electrons in strumming sky lights

Iowa State researchers make sense of a universe of corn based on genomics, data analytics

Brown research reveals how airflow inside a car may affect COVID-19 transmission risk

Michigan's Petty uses machine learning to predict breast cancer recurrences

## ALL-TIME MOST POPULAR

Largest Computational Biology Simulation Mimics The Ribosome

Complex Concepts That Really Add Up

Blue Sky Studios Donates Animation SuperComputer to Wesleyan

Humanities, HPC connect at NERSC

TeraGrid '09 'Call for Participation'

Turbulence responsible for black holes' balancing act

Cray Wins \$52 Million SuperComputer Contract



Silicon 'neurons' may add a new dimension to chips

Linux Networx Accelerators Expected to Drive up to 4x Price/Performance

SDSC Researchers Accurately Predict Protein Docking

---

[FRONTPAGE](#) [NEWS](#) [VIDEO](#) [EVENTS](#) [JOBS](#) [SOCIAL](#) [SUBSCRIBE TO EMAIL](#)  
[COMMUNITY GUIDELINES](#) [TERMS OF SERVICE](#) [PRIVACY POLICY](#) [ABOUT](#) [ADVERTISE](#)  
[SITEMAP](#) [RSS](#)

 +1 305 407 3713  [editorial@supercomputingonline.com](mailto:editorial@supercomputingonline.com)

© 2001 - 2021 SuperComputingOnline.com, LLC. All Rights Reserved. 