

6

5

4

3

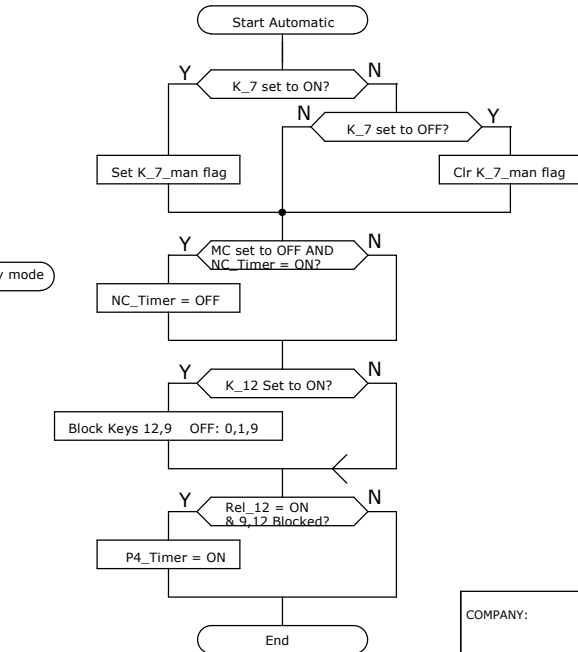
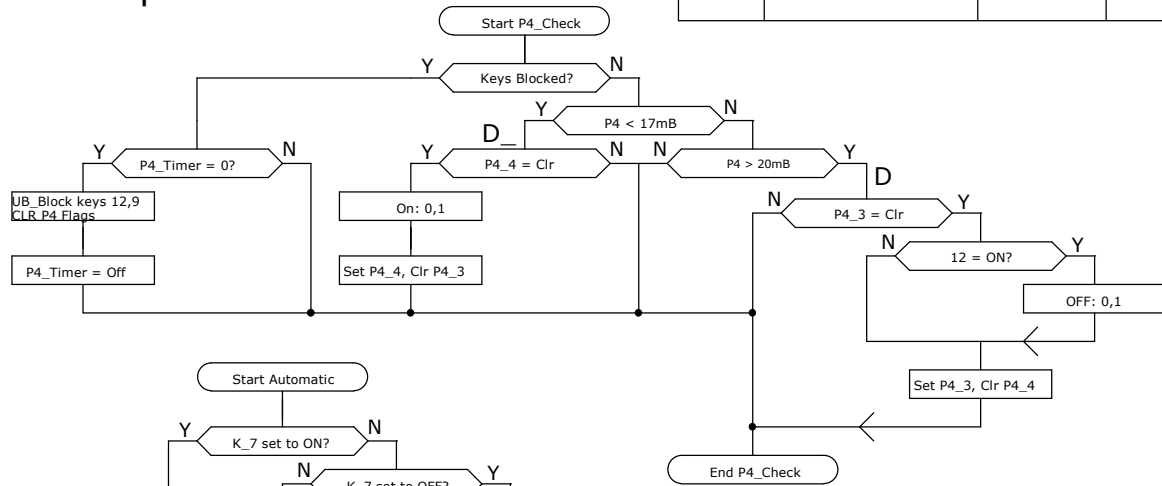
2

1

Version 9: When 12 has to be Opened first Close 0,1,9 then Open wait 2 seconds and recheck P4 to determine whether 0,1 should open or stay closed block keys 12 and 9 temporarily to prevent operator interference

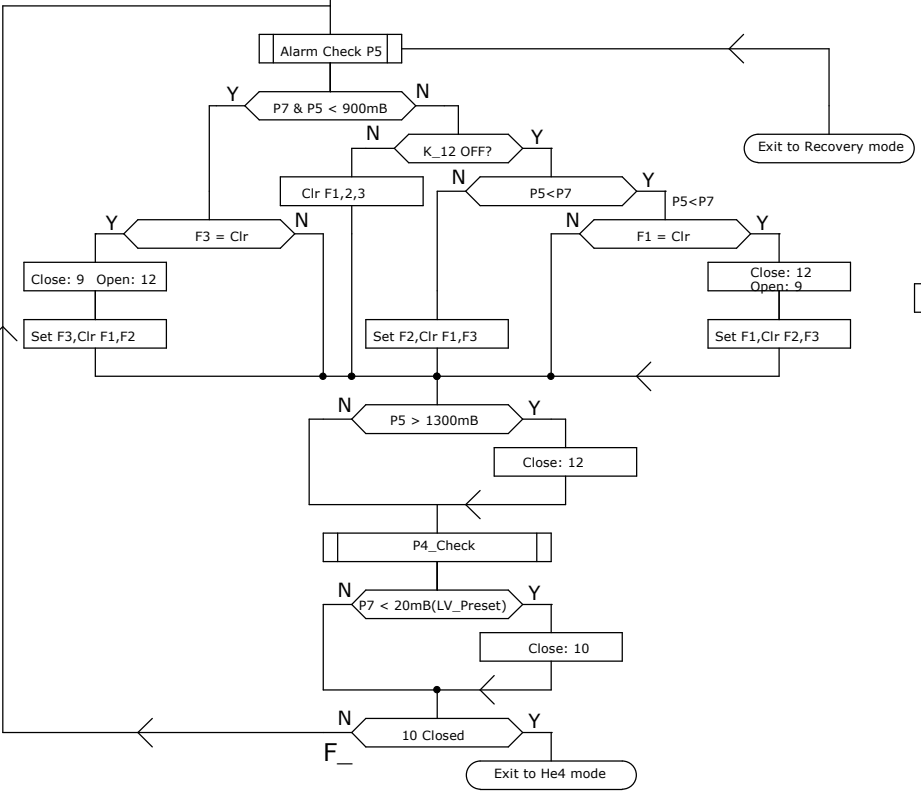
Version 10: Check P7 > 900mB removed
 Version 11: Check K_12 OFF added

REVISION RECORD			
LTR	ECO NO:	APPROVED:	DATE:



Start He3 Condensing

All Valves Off K_0 = Rel 36
 Unlock: A10, A9 K_1 = Rel 37
 Close: A10, A9 K_9 = Rel 6
 Lock: A10, A9 K_12 = Rel 9
 Open: 6,5,4,15,16,S1
 Open: S2,S3,3,2,1,0,GV
 Open: 10,MixtCmp,7



COMPANY: LEIDEN CRYOGENICS			
TITLE: SOFTWARE KLEPPEN PANEEL			
DRAWN: A H van Dalen	DATED: 08-07-2013	CODE: He3	REV: 11
CHECKED: A H van Dalen	DATED: 08-07-2013	SIZE: A3	DRAWING NO: GHS-2T-1T-700CF-2.5B-V2.48.1
QUALITY CONTROL:	DATED:	SCALE:	
RELEASED:	DATED:	SHEET: 1 of 1	